

Energy Profiler OnLine

November 2010



Your online tool to manage electricity use

nationalgrid

The power of action.™

What we will cover today

- ◆ **What is load data**
- ◆ **Energy Profiler Online – Review of the tool and how the information can be used**
- ◆ **Samples of verified energy savings**
- ◆ **PowerScape**
- ◆ **Questions**

Energy Profiler Online

- ◆ A tool for analyzing your electric load profile
- ◆ EPO provides “demand” and “energy usage” information
- ◆ A data base of historical kW for every 15 minute period (interval data)
- ◆ EPO is a tool offered to customers by many utilities

What is interval data?

- ◆ It is **NOT** instantaneous demand.
- ◆ It is the number of kWh consumed over a period of time.
- ◆ These numbers can be converted to demand.
 - ◆ For example 100 kWh for 15 minutes is $100 \text{ kWh} / .25 \text{ hrs}$ or 400 kW.
- ◆ **Interval data does not appear on your bill!**

Would you drive your car without any gauges?

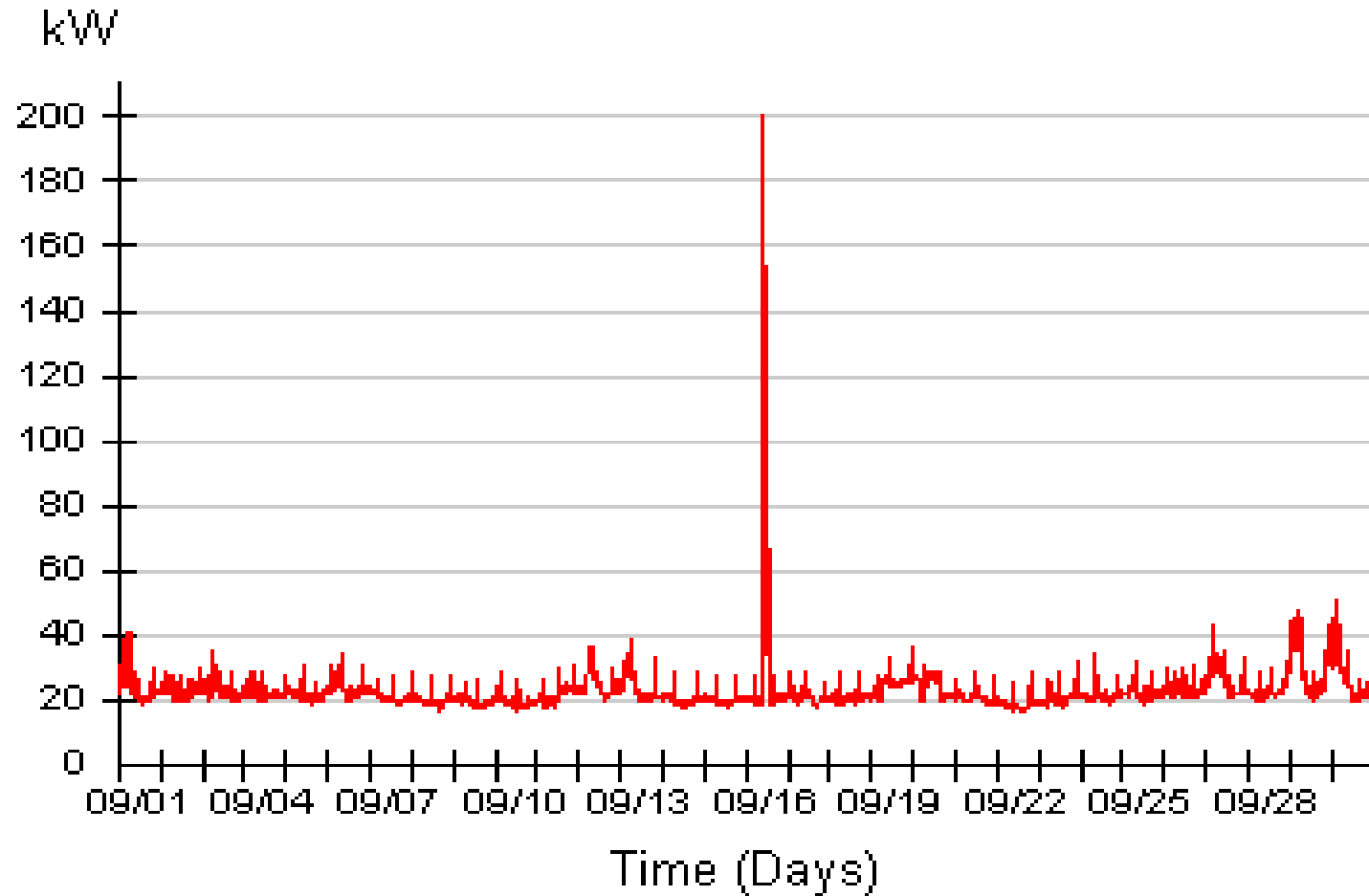


Energy Profiler Online (EPO)

Your Energy Management Tool

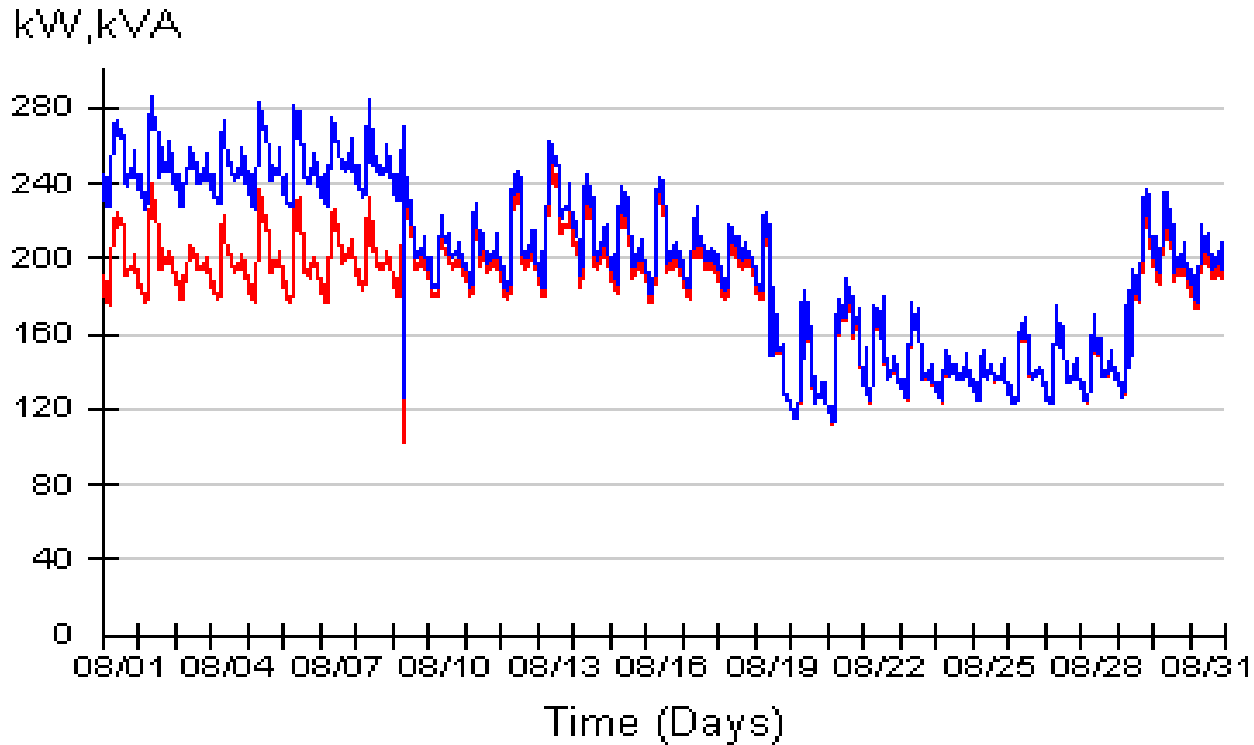
- Monitor your Energy usage and peak demands.
- Identify usage patterns that can be adjusted for savings.
- Ability to monitor your Power Factor.
- Compare usage patterns in multiple facilities.
- Verify savings.
- Monitor usage in “Off Hours”.
- Ability to set Alarms.
- Watts per square foot bench marking tool.
- Assist in budgeting. Specific time period analysis.
- Provides crucial information to shop wisely for power suppliers.

Review your monthly load shape for any irregularities

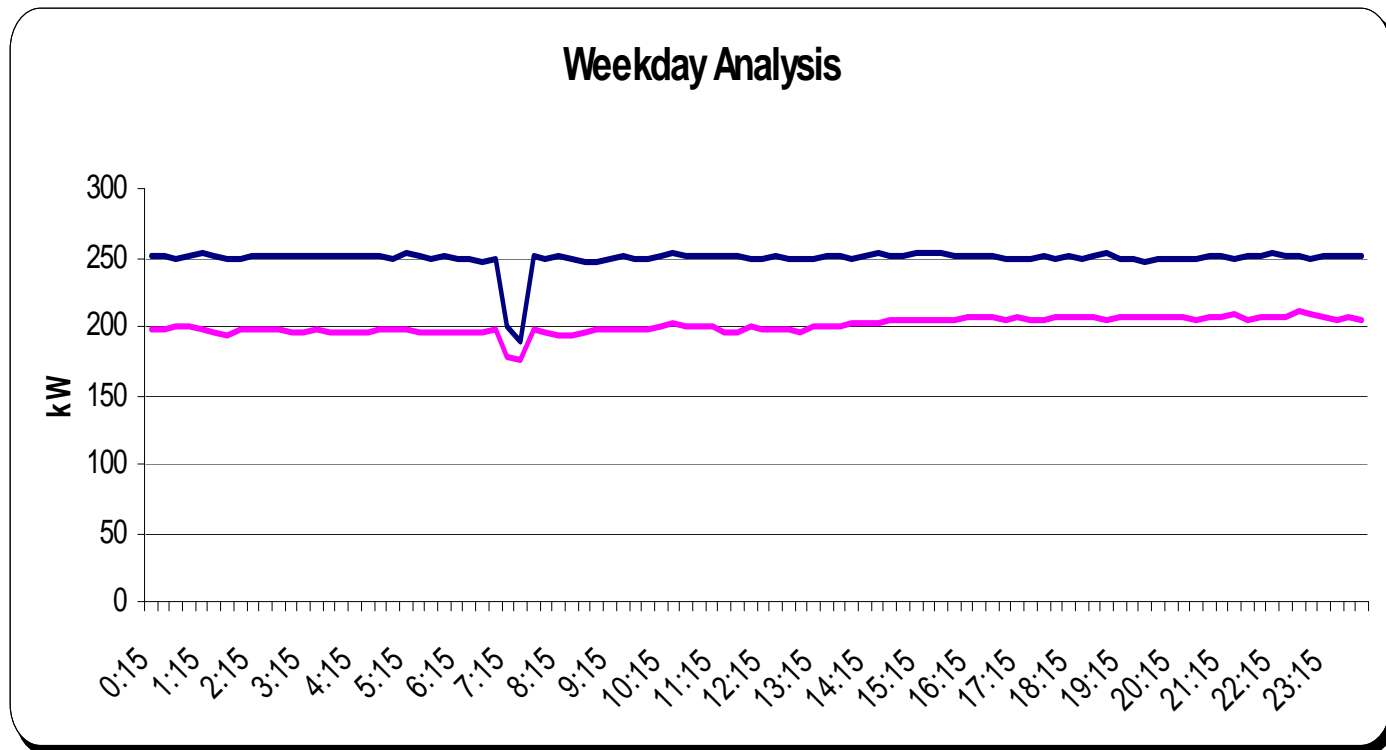


Cooling an empty building for workers to move equipment cost this customer \$800

Monitor your Power Factor

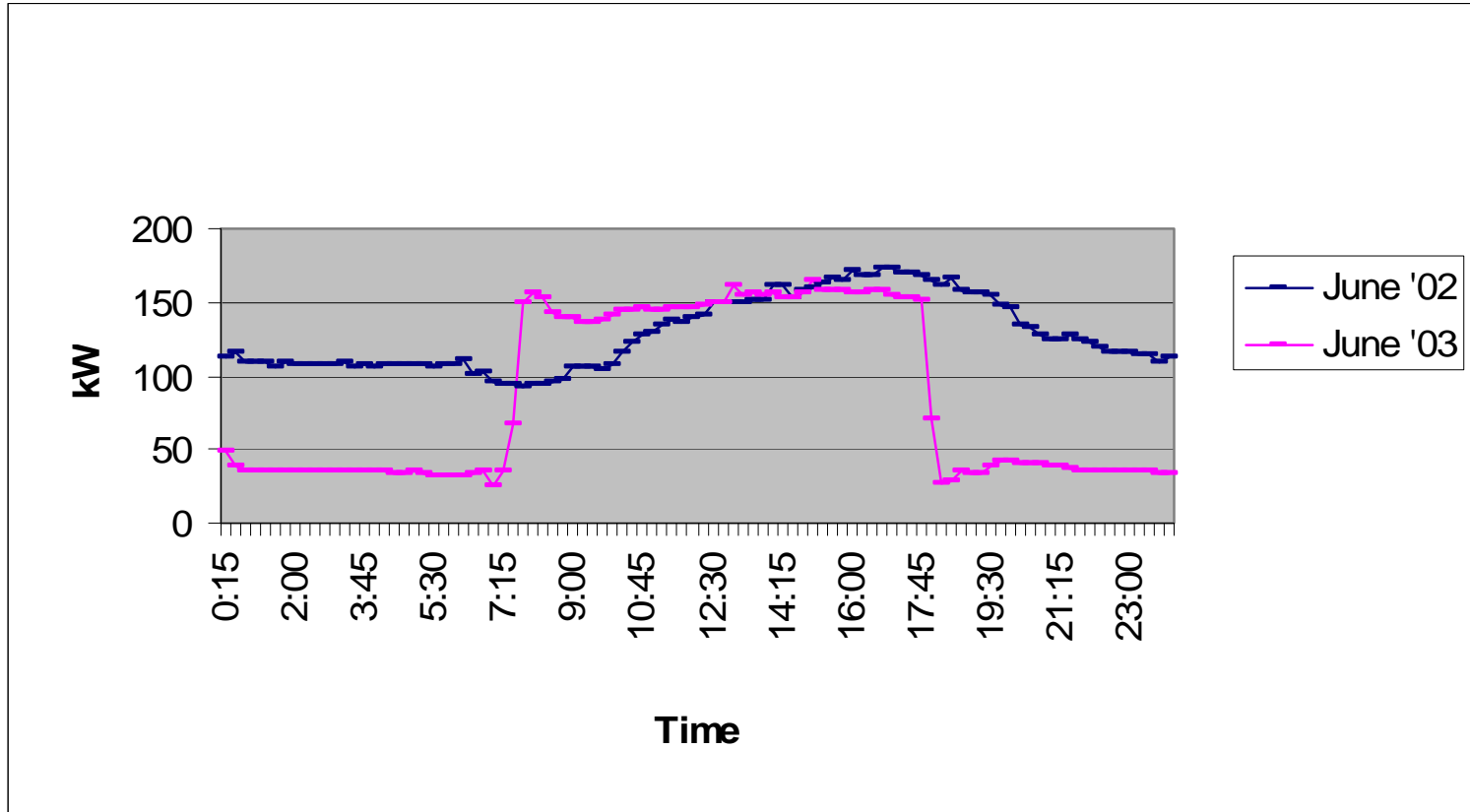


Verify Savings from optimizing operation



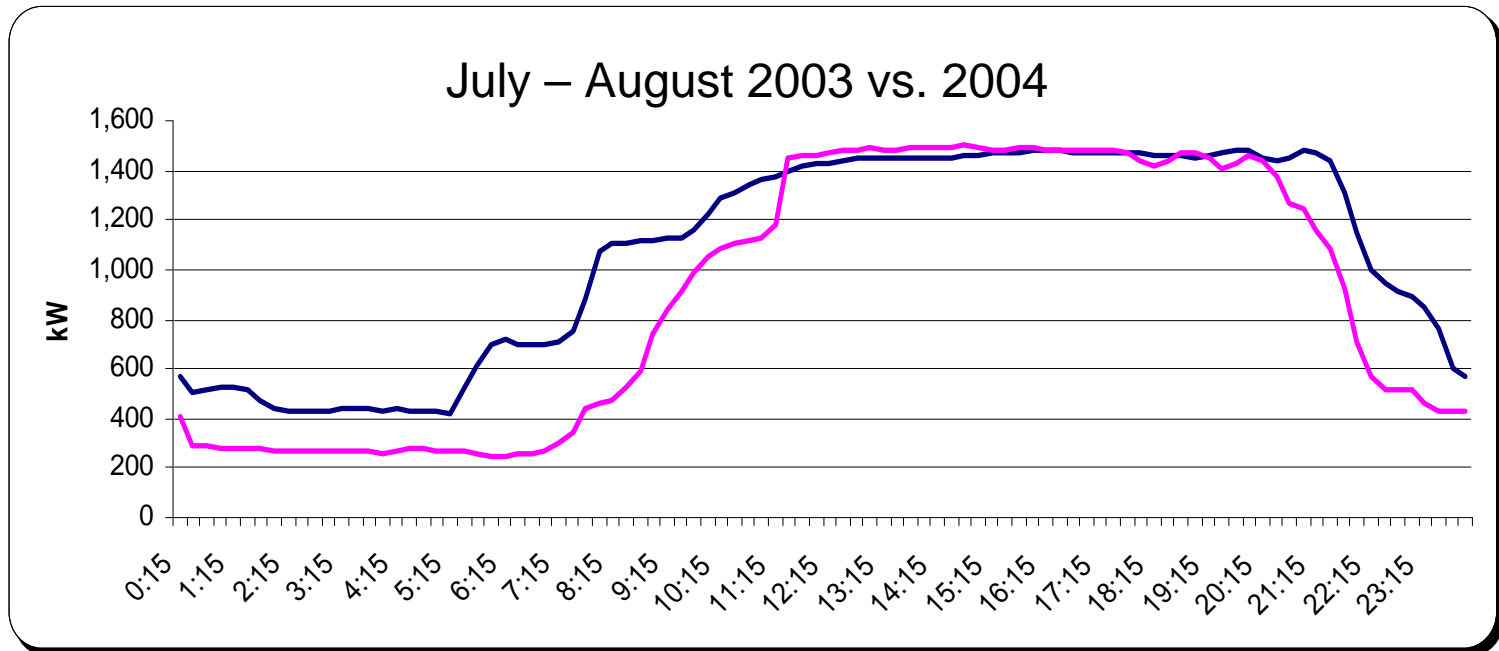
This Data Center verified annual savings of \$40,000 by shutting off an HVAC unit!

EMS installation saves!



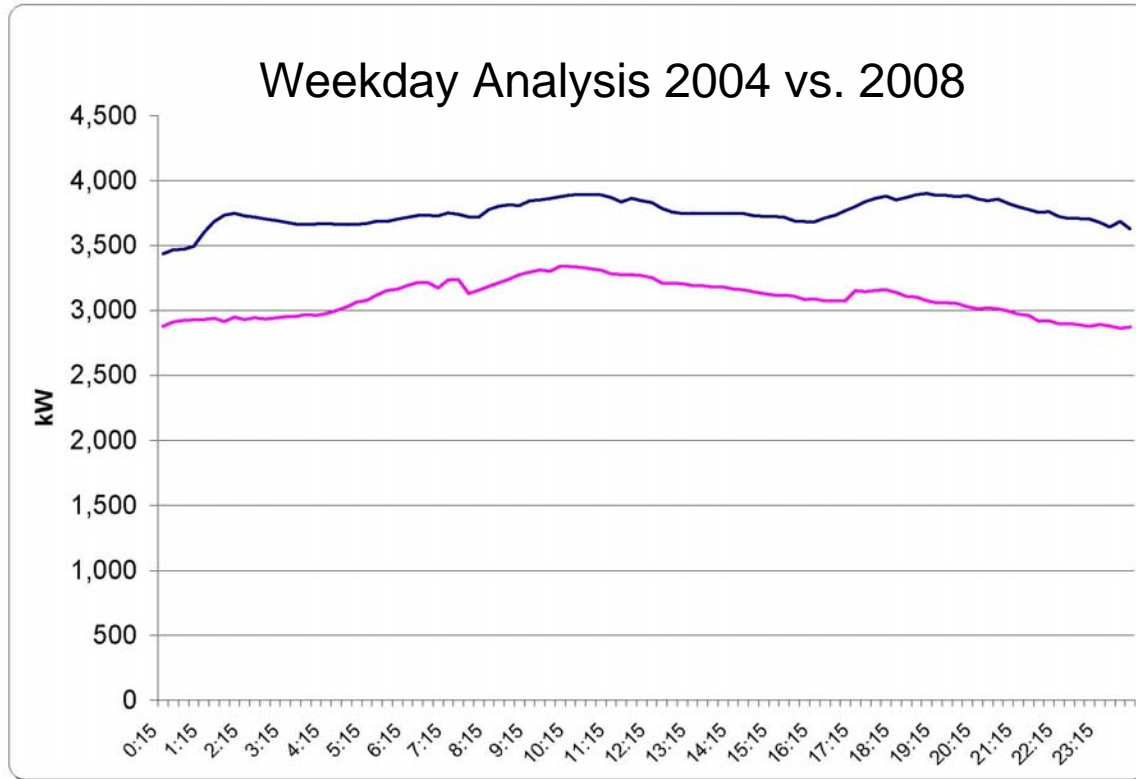
EPO visual verifications are compelling – EMS installation saves \$25-30K annually

Optimize existing EMS



Optimizing an existing EMS saved a local mall \$75 – 100K per year!

A disciplined approach over time helps save!

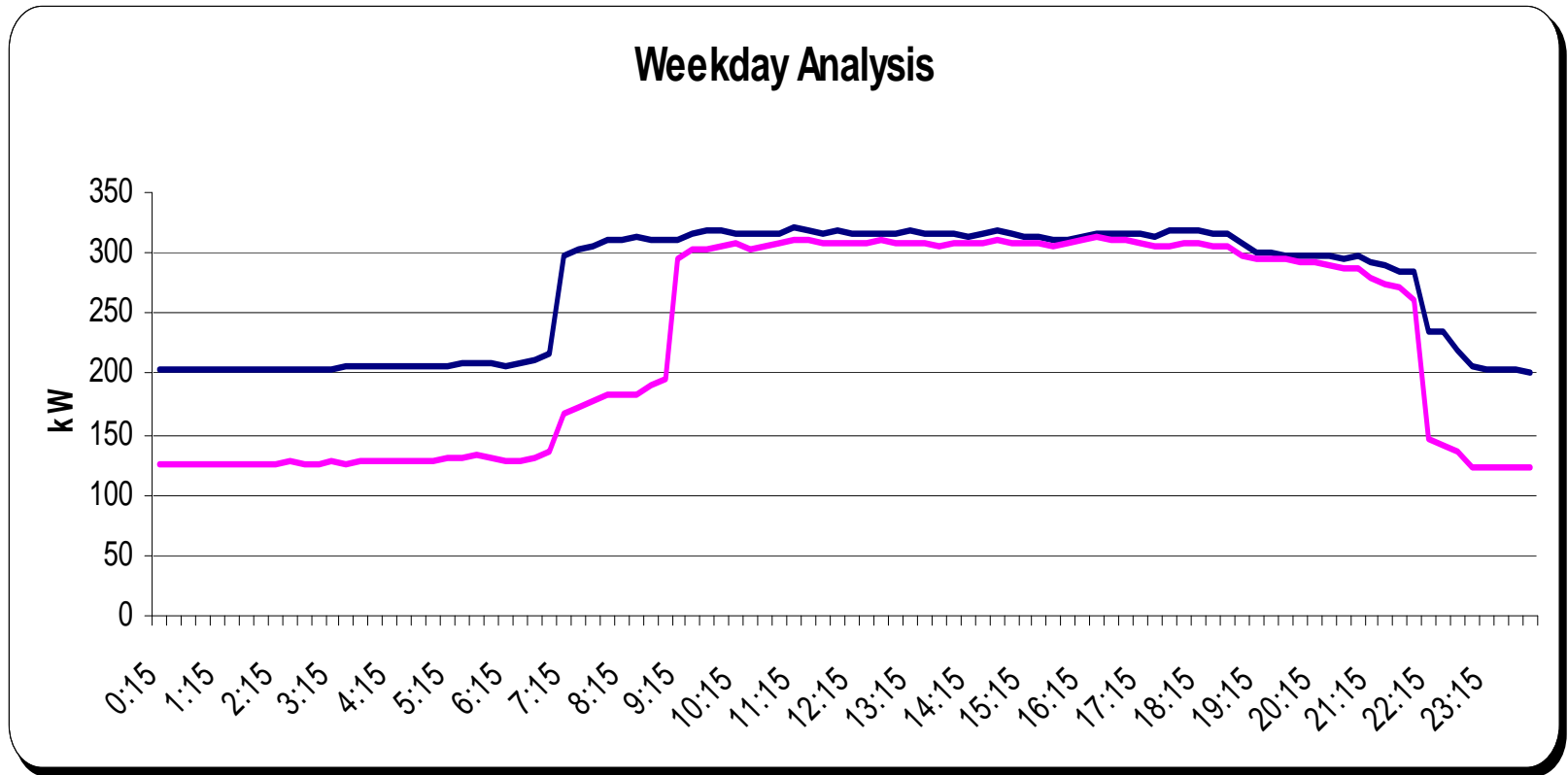


Estimated annual savings \$760,000!

Estimated annual CO2 reduction 7,256,700 lbs.

Shutting off lights!

National Grid's teams up with furniture retailer to lower their electric bills!



Shutting off lights in off hours saves \$51,000 annually!

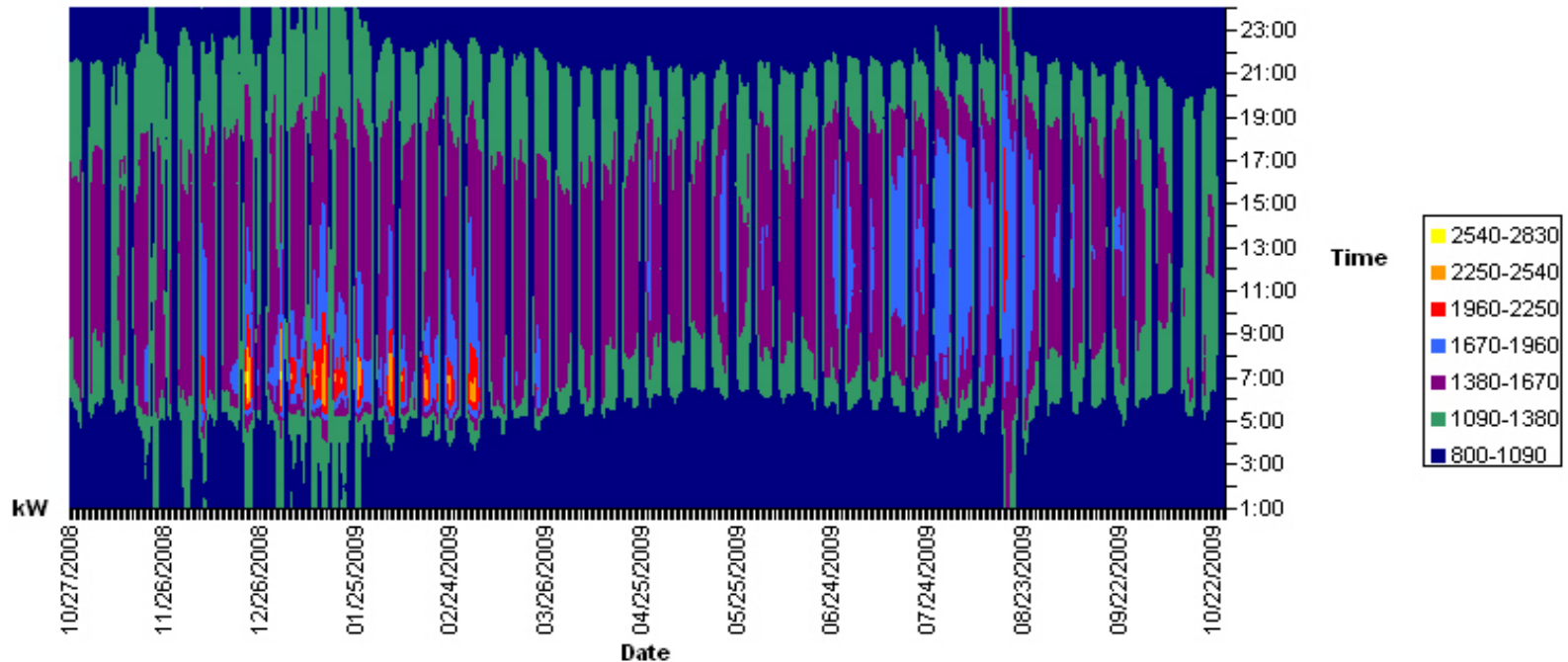
nationalgrid

The power of action.

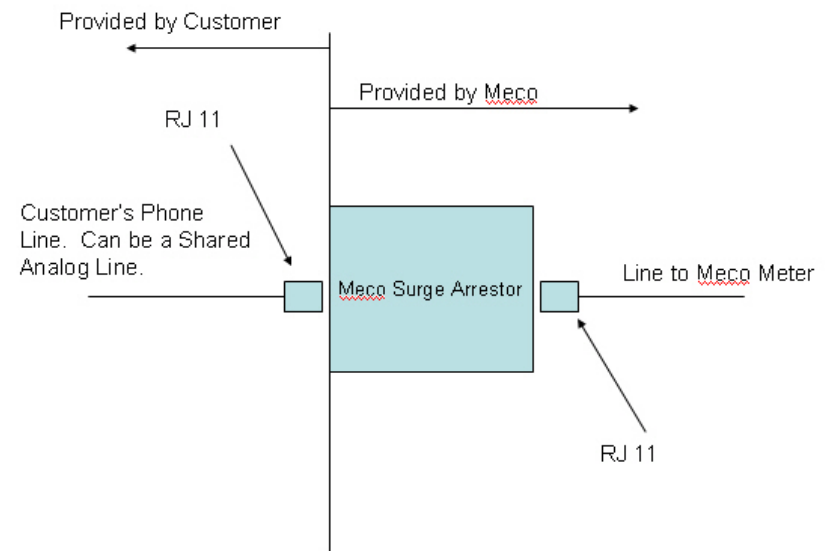
Data can be used for additional analysis

nationalgrid
PowerScape

PowerScape - 0021603001 JONES LANG LASALLE



Modem & Pulse Service



*Phone line should be supplied to within 1 foot of the meter.

Energy Profiler Online - MA

- ◆ **Annual subscription fee of \$154.00**
 - ◆ \$76.89 for additional accounts subscribed at the same time
- ◆ **Data is refreshed each billing period**
- ◆ **Modem meter service is available – data is refreshed daily (two day lag)**
 - ◆ One time fee of \$333.31
- ◆ **Pulse Service for using with EMS**
 - ◆ One time fee of \$167.44
- ◆ **Paybacks for these services are typically within days!**

Questions?

Ron Gillooly

781-907-1560

ronald.gillooly@us.ngrid.com

https://www.nationalgridus.com/masselectric/business/programs/3_energy_profiler.asp

<http://epo.energyinteractive.com/neesepo/cgi/eponline.exe>